

Dell Wireless Client Utility Tool

1. Right click on the strength meter in the lower right hand corner of the task bar



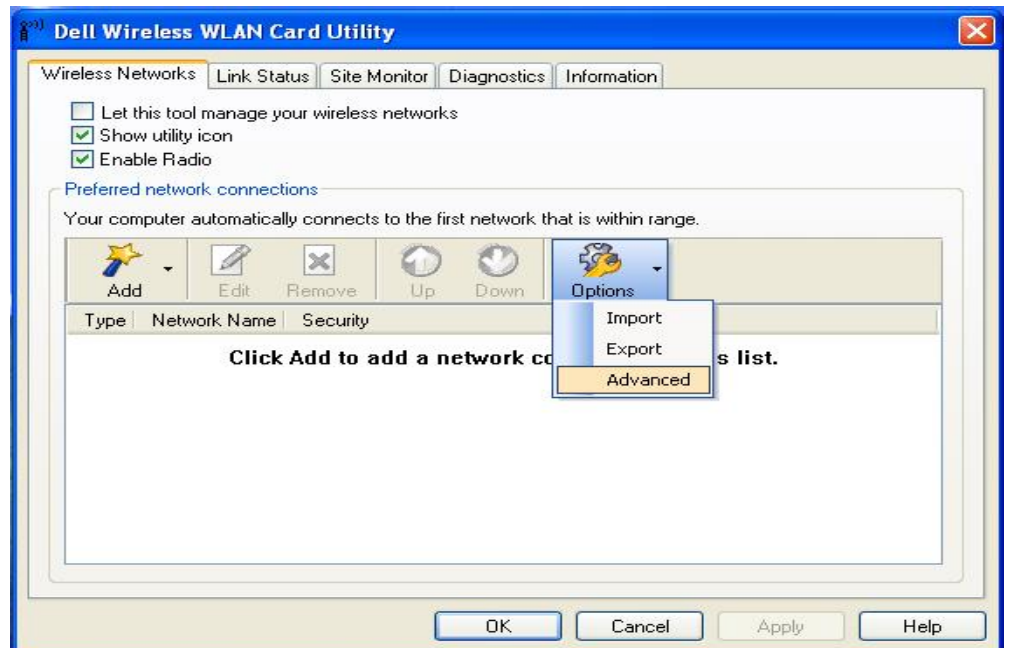
2. Click **Open Utility**



The **Dell Wireless WLAN Card Utility** window will open

3. Click the ▼ next to **Options**

4. Click **Advanced**



The **Advanced** window will open

5. Click the radial button “**Access point (infrastructure) networks only**”

6. Click **OK**

7. Click **OK** to close the Utility window

