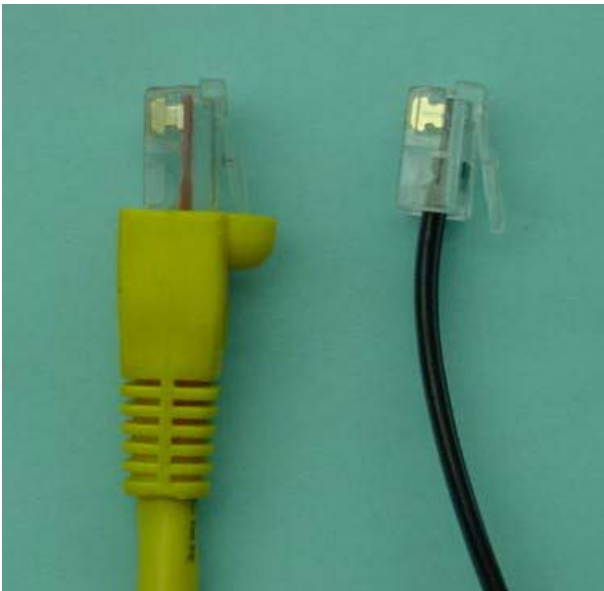


Dorm Ethernet Setup with Windows XP

Plug one end of your Ethernet Cable (CAT5) into the data jack on the wall and the other end into the data jack of your Ethernet card (This is located in the back of your computer). If you have properly connected the cable, the small LED lights on the Ethernet card should light up.



T
h
e

y
e
l
l
o
w

c
a
b
l
e

to the left is an Ethernet cable and the cable to the right is a standard telephone cable. Take notice of size difference between the two. Ethernet cables are noticeably thicker and will not fit into a standard phone jack.



When the ethernet card is properly installed, LED lights will light up.

Next, point your cursor to Start → All Programs → Accessories → Communications → Network Setup Wizard.




Click Next



Click Next

Network Setup Wizard

Select a connection method. 

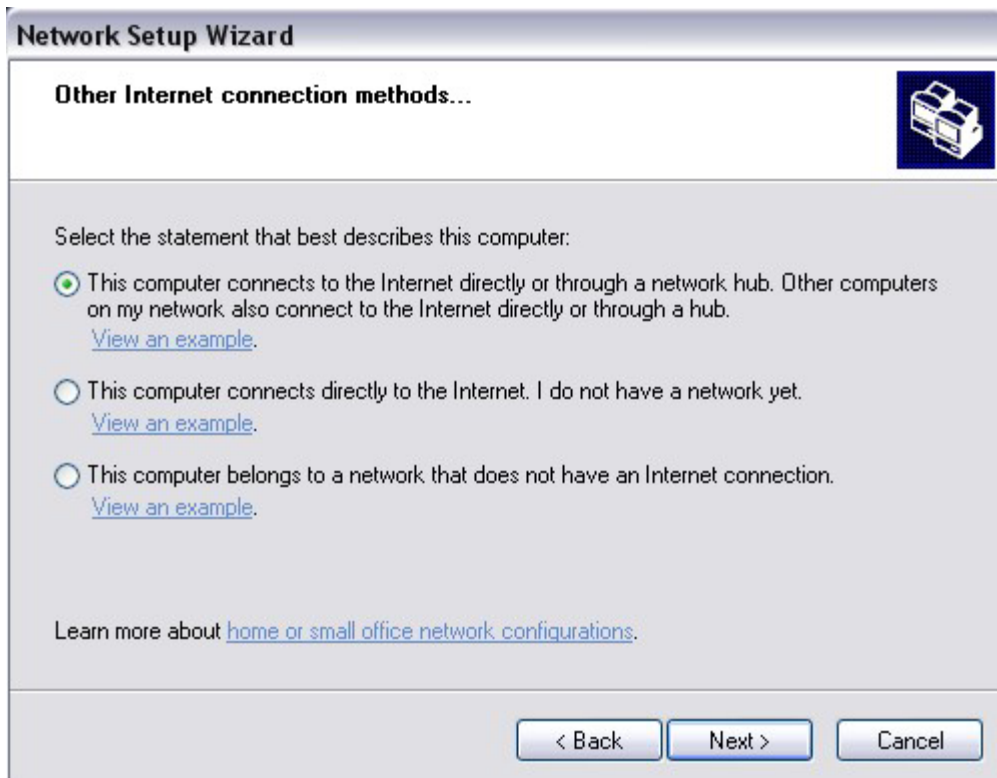
Select the statement that best describes this computer:

- This computer connects directly to the Internet. The other computers on my network connect to the Internet through this computer.
[View an example.](#)
- This computer connects to the Internet through another computer on my network or through a residential gateway.
[View an example.](#)
- Other

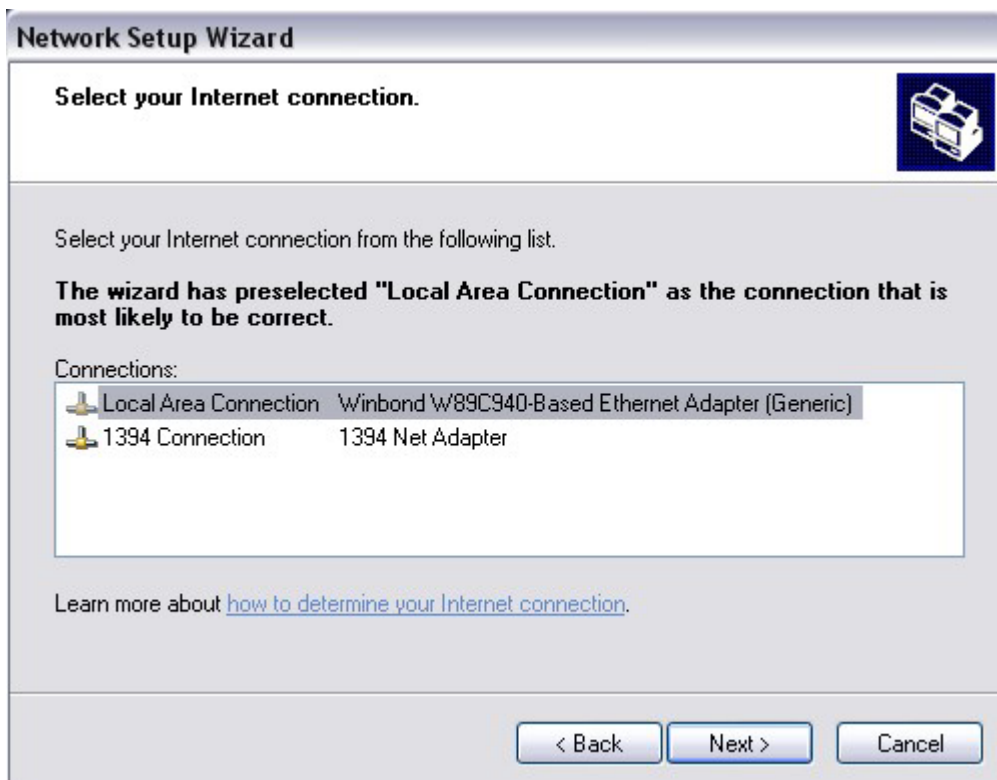
Learn more about [home or small office network configurations.](#)

< Back Next > Cancel

Select Other, then click Next.



Click Next.



Select your Ethernet Card from the list. It is most often the adapter with Local Area Connection in the far left column. Many Ethernet cards commonly have 10/100 BaseT in their names as well. Click Next.

The remaining few steps will ask you to enter information about your computer such as a name, description, and workgroup. This information is not necessary for the Ethernet to work and can be whatever you choose.

Once you have completed the setup, you are ready click on the Internet Explorer icon and surf the net!