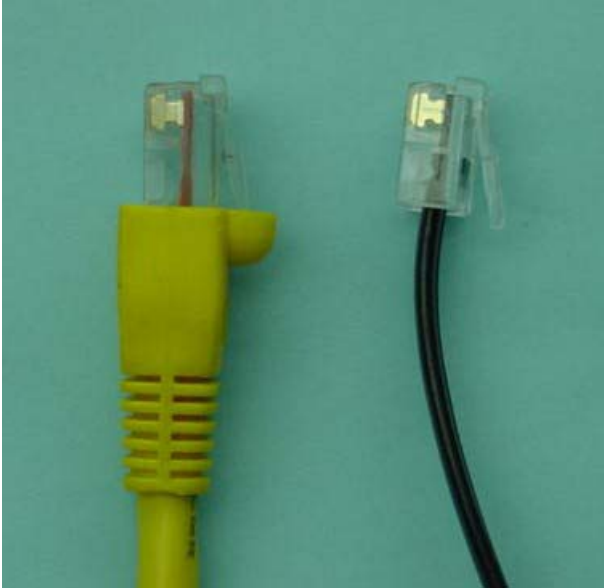


DHCP Ethernet Setup for Mac OS X

Plug one end of your Ethernet Cable (CAT5) into the data jack on the wall and the other end into the data jack of your Ethernet card (This is located in the back of your computer).



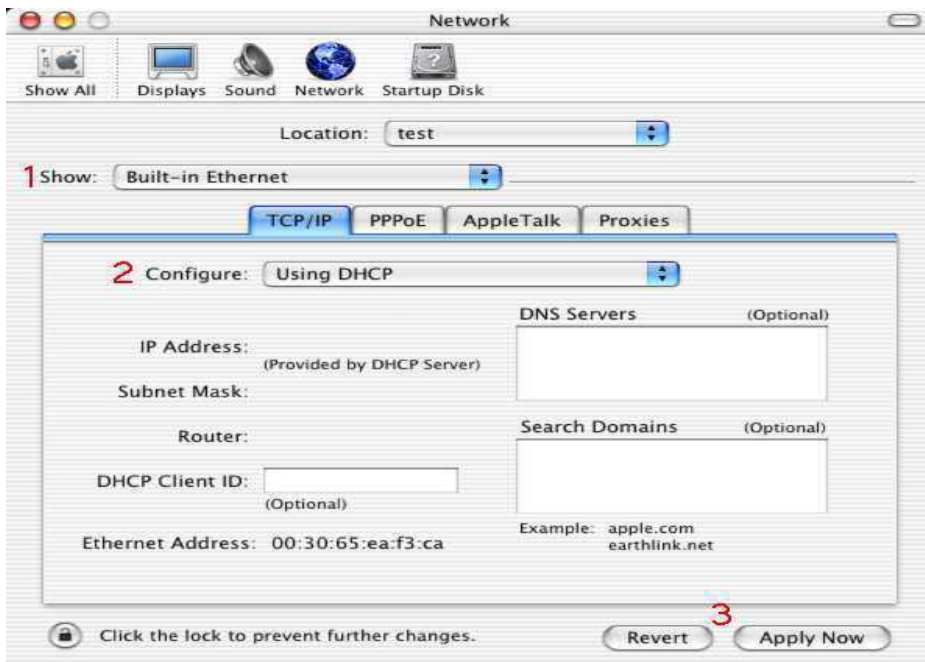
The yellow cable to the left is an Ethernet cable and the cable to the right is a standard telephone cable. Take notice of size

difference between the two. Ethernet cables are noticeably thicker and will not fit into a standard phone jack.

Go to the **Apple menu** and choose **System Preferences**.



Click on **Network**. It is located under **Internet & Network**.



- 1** Make sure **Built-in Ethernet** is selected next to **Show:**
- 2** **Using DHCP** should be selected for **Configure:**
- 3** Click **Apply Now** then Quit out of **System Preferences**.

